

1. Introduction.....	
..1	
1.1 Compatibility.....	
.1	
1.2 Features.....	
..1	
1.3 Check	
List.....	2
2. Adapter	
Installation.....	3
2.1 Adapter	
Layout.....	3
2.2 How to setting up this card with your	
Television.....	5
2.3 Installation	
procedures.....	6
2.4 Connecting the display and optional	
TV.....	7
3. Utilities and Drivers	
Installation.....	8
3.1 Microsoft	

Windows	8
3.2 OS/2 Driver	
Installation.....	18
3.3 DOS	
Utilities.....	20
3.4 AutoCAD TurboDLD Classic Driver by Panacea.....	22
3.5	Optional TV
OUT.....	25
4. Frequently Asked Questions (FQA)	26
5. Troubleshooting.....	28
6. Appendix A : Video Mode Table.....	29
7. Appendix B : Pin-out and Sync Frequencies.....	33
8. Appendix C : FCC Compliance Statement.....	34

1.1 Compatibility

- ☑ This 3D/2D Graphical User Interface (GUI) accelerator adapter is IBM VGA compatible on BIOS, register, and hardware. 3DImage **PCI** VGA works only with a Peripheral Component Interconnect (**PCI**) bus slot. 3DImage **AGP** VGA works with a Accelerated Graphics Ports (**AGP**) bus slot.

1.2 Features

3DImage VGA (PCI BUS & AGP BUS)

- ☑ High Performance rCADE3D Accelerator
- ☑ Open GL compliant blending operations
- ☑ High performance: 1.2 million polygons/second and 67 million rendered pixels/second drawing rates
- ☑ On-chip set-up engine. Includes back face culling , trisstrip and sub-pixel positioning
- ☑ Accelerates the most frequently used 2D functions in today graphics-intensive environments plus complete 3D GUI acceleration:
 - Complete 3D primitive support
 - Texture mapping
 - Gouraud Shading for smooth shading
 - Alpha blending for transparency effects
 - Fog
 - Z-buffering at 16/32 bit-per-pixel
 - Page flipping for double and triple buffering for smooth animation effects
- ☑ Accelerates the most frequently used 2D GUI/video operations
- ☑ Supports up to 1600x1200x64k Hi-colors mode using 4MB of Extended Data Out (EDO) DRAM or SGRAM on board. Supports up to 1024x768x64k Hi-colors mode using 2MB of memory.
- Supports up to 1024x768 in 16, 256, 32K, 64K and 16M colors non-interlaced
- Supports 1280x1024 in 16, 256, 32K and 64K colors non-interlaced
- Supports 1600x1200 in 16, 256, 32K and 64K colors non-interlaced
- ☑ Supports VESA Display Power management Signaling (DPMS) and VESA DDC 2b standards available on most of multisync monitor.
- ☑ Software MPEG playback or live video capture capable.
- ☑ Optional connection to NTSC or PAL standard television through a standard composite video jack or S-video jack. (Option with TV-OUT)
- ☑ Supports the standard IBM Feature Connector (FC) and Video Module Interface (VMI) Host Connector for sending graphics data to an add-on video controller

3DImage VGA with DVD (975 DVD & 985 DVD CHIPSET SUPPORT)

- THAMA Architecture enables full DVD player support with AC3 in MMX enabled Pentium 166 and higher
- Requires no extra frame-buffer
- Support freeze, fast-forward, slow motion, reverse

1.3 Check List

The package you have purchased should contain the following:

- Trident 3D IMae9x5 3D/2D GUI Accelerator Adapter Card
- One Display Drivers and Utilities CD or five diskettes Driver
- S-Video television output cable (Optional with TV-OUT)
- 3DImae *User's manual*

If any of these items are missing or damaged, contact your dealer.

Important: Keep all packaging materials that accompany your adapter in the event you need to return the product.

1.3.1 VESA DPMS AND VESA DDC2B SUPPORTED

Supports VESA Display Power management Signaling (DPMS) which decreases energy consumption when used with a monitor that meets the VESA standards for power management. Supports VESA DDC 2b standards for automatically selecting the correct display setup on a monitor that meets the VESA DDC standard.

1.3.2 SOFTWARE MPEG VIDEO PLAYBACK

Full-motion software MPEG video playback through 3DImae975x fast video accelerator is available with the installation of a software MPEG player.

1.3.3 DCI AND DIRECTDRAW SUPPORTED

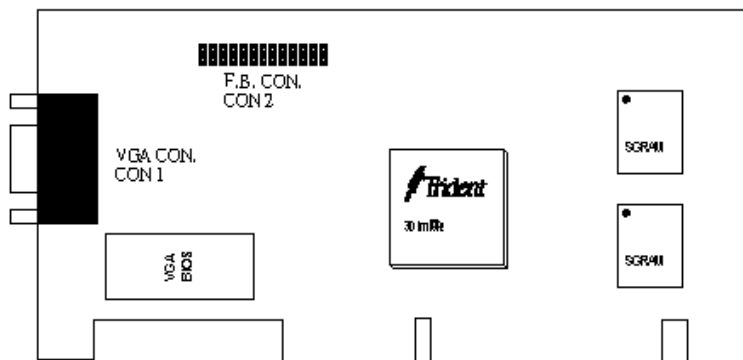
Supports DCI for Windows 3.1x and DirectDraw for Windows 95 for enhancement of display quality and playback performance during software MPEG video playback. Both DCI for Windows 3.1x and DirectDraw for Windows 95 are memory manger for video memory. Using such memory manager for video manger, a program can manipulate video memory with ease, taking full advantage of the blotting and color decompressing capabilities of 3DImae975x video hardware.

1.3.4 TV OUT (OPTIONAL WITH TV-OUT)

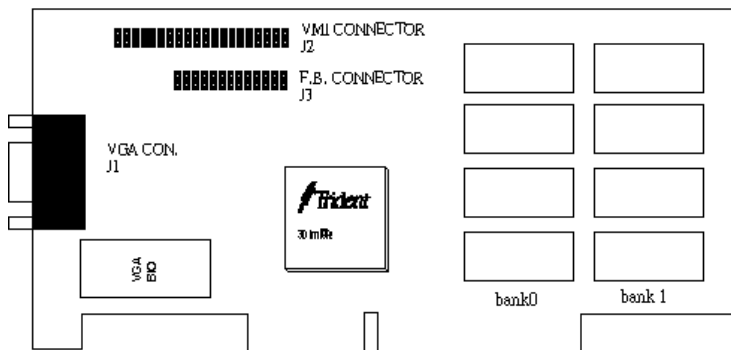
The 3DImae9750 is capable of displaying all standard and some extended VGA video modes on an NTSC or PAL TV. Resolutions up to 720x480 can be displayed on NTSC TV; resolutions up to 800x600 can be displayed on PAL TV. Extra features are built-in to reduce line flickering and to vertically scale the image for TV display.

2. Adapter Installation

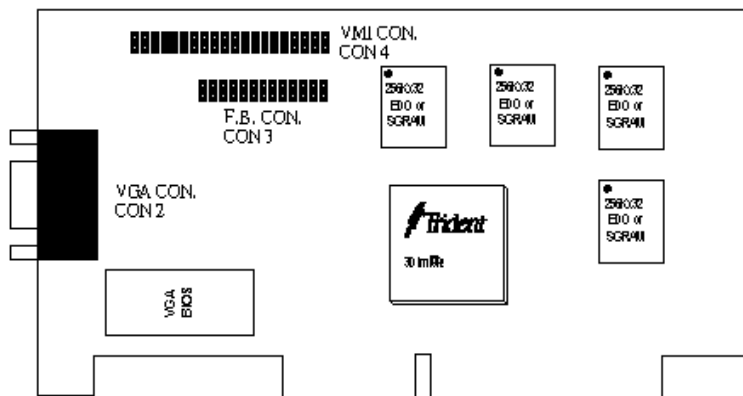
2.1 Adapter Layout



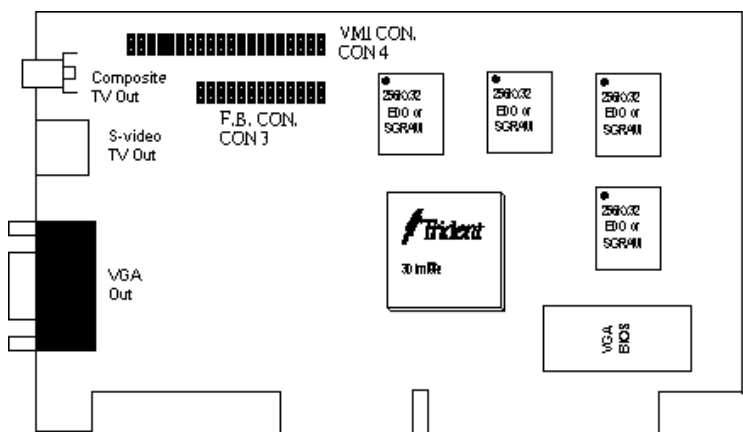
3D Image 975D AGP BUS SGRAM (USING 512Kx32 SGRAM 2 layer)



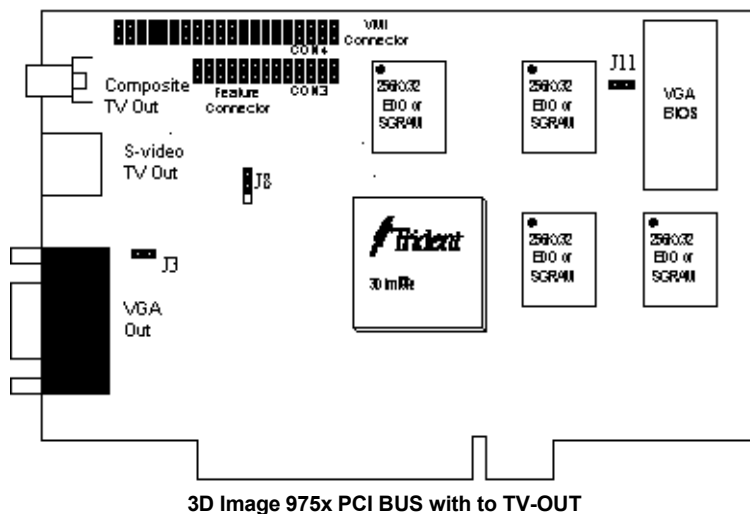
3D Image 975x AGP BUS EDO RAM



3D Image 975x AGP BUS SGRAM



3D Image 985x AGP BUS SGRAM



2.2 How to setting up this card with your Television

TV NTSC SYSTEM J3 OPEN

J8 1-2

J11 STUFF

TV PAL SYSTEM J3 STUFF

J8 2-3

J11 OPEN

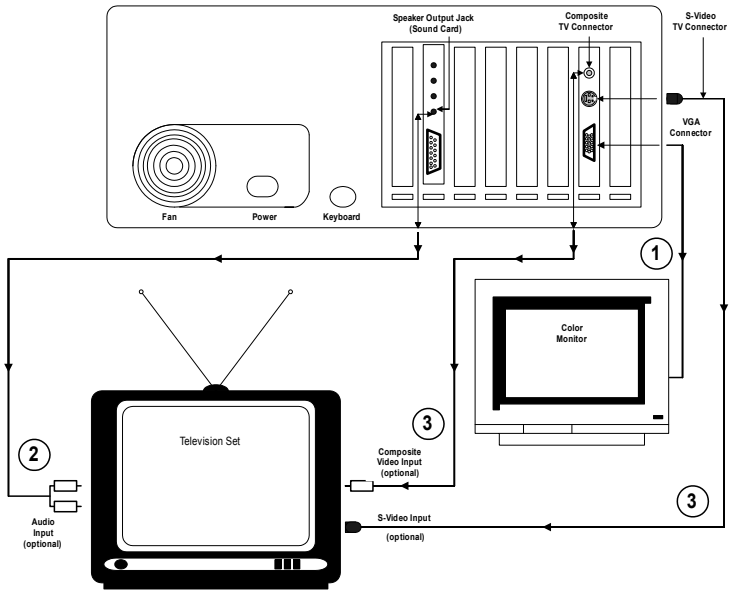
2.3 Installation Procedures

To install the adapter into your system, follow these steps:

1. Turn OFF all power to your system, including any peripherals (printer, external drives, modem, etc.).
2. Disconnect the power cord and the monitor cable from the back of the computer.
3. Unfasten the cover mounting screws on your system and remove the system cover. Refer to your system user manual for instructions and to determine the location of the mounting screws.
4. Remove any graphics adapter that already exists on your motherboard. Start by removing the screw that holds the adapter retaining bracket in place (keep this screw, you will need it later). Then, gently pull straight up on the adapter card itself, and remove it from the motherboard.
5. If appropriate, you can use the expansion slot left vacant by the existing graphics adapter you just removed. Otherwise, select an appropriate unused PCI bus expansion slot for the new adapter. Refer to your computer system manual for the location of the PCI bus expansion slots. Remove the retaining screw that holds the slot cover in place. Slide the slot cover out and put the screw aside (you will need it to secure the adapter).
If you just removed an existing graphics adapter and are not going to use that expansion slot, you can install the slot cover you just removed from the unused expansion slot to cover the open hole.
6. Install the adapter. To install the adapter in the selected expansion slot, carefully line up the gold-fingered edge connector on the adapter directly above the expansion slot connector on the motherboard. Then press the adapter into place, completely, using only as much pressure as is safely necessary. DO NOT USE excessive force. Use the (remaining) screw you removed to secure the adapter retaining bracket in place.
7. Replace the computer cover. Secure the cover with the mounting screws you removed in Step 3.
8. You have now completed the installation of your new graphics adapter on your system. Before you use the system, however, please refer to the following sections, connecting the Display”.

2.4 Connecting the Display and Optional TV

Back of Computer



1. The adapter offers a standard VGA 15-pin analog connector. When you connect your monitor to the adapter, be sure you have the right cable and cable connector. Fixed-frequency analog monitors come equipped with a 15-pin connector. Variable frequency analog or analog/digital monitors may require a 9-to-15 pin cable connector.
 2. If your system is equipped with a sound board, you can also connect a Y-cable for speaker (single male mini stereo phone jack to double male RCA jack) from the Speaker-Out jack of the sound board to the Audio-In jack on your television set.
 3. For optional TV connection, please check the back of your TV or VCR for the presence of a S-Video connector. If such a connector is present, you will need a S-Video cable to connect S-Video TV-Out on the adapter to S-Video In on the TV or VCR. If such a connector is not available, a RCA video cable is needed to connect Composite TV-Out on the adapter to Composite Video In on the TV or VCR. S-Video connection is recommended since it provides a higher quality display.
-

3. Utilities and Drivers Installation

3.1 Microsoft Windows

3.1.1 MICROSOFT WINDOWS 95 DRIVER INSTALLATION FROM DISKETTE OR DISC

1. ENSURE that MS Windows 95 is up and running properly using the Trident SVGA driver that it has detected.
2. OPEN the "My Computer" program group and SELECT the "control Panel" icon as shown in Figure 3-1

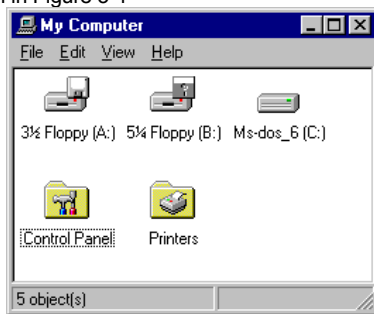


Figure 3-1.

3. SELECT the display" icon and then SELECT the "settings" page (refer to Figure 3-2).

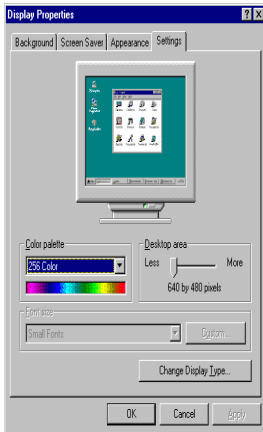


Figure 3-2.

-
4. SELECT either the Change Display Type” or the Advanced Properties” selection bar, and then SELECT the Change” button next to Adapter Type (refer to Figure 3-3).

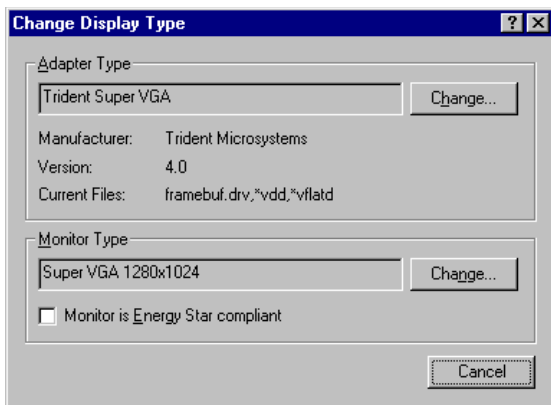


Figure 3-3.

5. On the Select Device” page, SELECT the Have Disk” button to install the Trident display driver from Diskette of the Drivers and Utilities diskette or Disc of CD ROM (refer Figure 3-4)

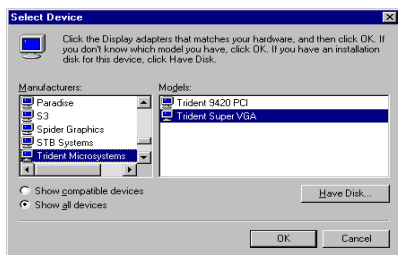


Figure 3-4.

-
6. After the Have Disk” button is selected, an Install From Disk” window will appear. SELECT the Browse” button to browse the directory X:\WIN95” of your diskette drive (or DISC from CD ROM) where X: stands for the drive letter of your diskette drive in your system (refer to Figure 3-5).

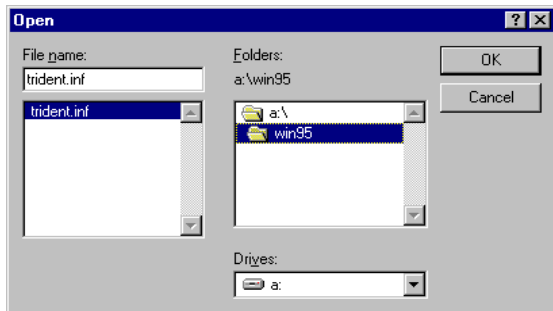


Figure 3-5.

7. Once in this directory, the file TRIDENT.INF will appear under file name list. SELECT OK” to return to the Install From Disk” window (see Figure 3-6). Under the statement Copy manufacturer files from” , the line X:\WIN95 should appear. SELECT OK” to start installing the driver files from the diskette drive(or DISC).

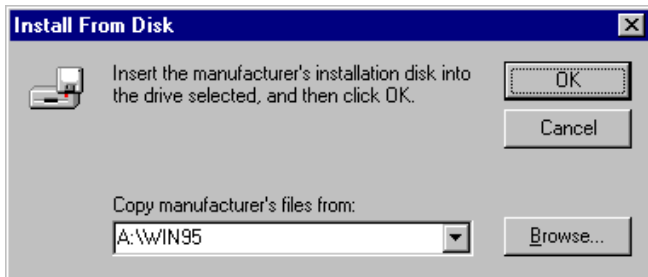


Figure 3-6.

-
8. After the files have been copied from the diskette drive to the hard drive, a “select device” window will appear as shown in Figure 3-7. Under Models, the line, Trident 3DImae 975x linear accelerated for PCI V5.Xx.xx” will now be listed

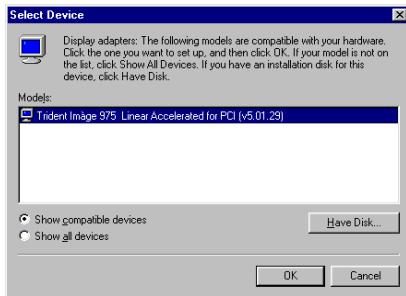


Figure 3-7.

9. **SELECT** the “OK” button to close the “Select Device” window and to select the Color Palette”, Desktop Area”, and Refresh Rate” of your choice under the Trident accelerated driver (refer to Figure 3-8)

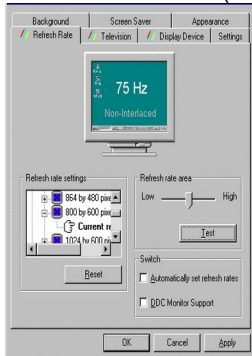


Figure 3-8.

Once the desired color palette (the number of colors), desktop area (resolution)

and refresh rate have been chosen, the Windows 95 system will be re-started using the Trident accelerated driver.

3.1.2 MICROSOFT WINDOWS NT 4.0 DRIVER INSTALLATION

1. SELECT the Display" icon in control panel and then SELECT the "Settings" page.
2. SELECT Display Type..." button in the Settings" page.
3. SELECT Change..." button from the Adapter type section.
4. SELECT Have Disk..." button from the Change Display page.
5. Microsoft Windows NT 4.0 will prompt you for the correct path where the Trident drivers are located. ENTER the path X:\NT40" where X: is the drive where Disk (or DISC) of the 3DImae975x Drivers & Utilities diskette has been inserted.
6. If the driver Trident Video Accelerator" is listed under the Display list, SELECT the OK" button to continue.
7. Once the driver files are copied, RESTART Microsoft Windows NT 4.0 for the changes to take effect.
8. SELECT the desired color palette (the number of colors), desktop area (resolution), and refresh frequency in the settings page of Display Properties and then SELECT the Rest" button in the same page to determine whether your selection works properly. SELECT Apply" to active the selected mode.

3.1.3 MICROSOFT WINDOWS 3.1x DRIVER INSTALLATION

The graphic installation program (TINSTALL) supports a simple six-step installation procedure for the display driver setup program, the power management program and the UNinstall program.

To use TINSTALL, follow the 6 steps below:

1. ENSURE that MS Windows 3.1x is up and running properly, using the standard VGA driver.
2. SELECT the MAIN group in Program Manager.
3. CLICK on FILE or press ALT + F (see Figure 3-9)
4. CLICK on RUN or PRESS R to select command line.

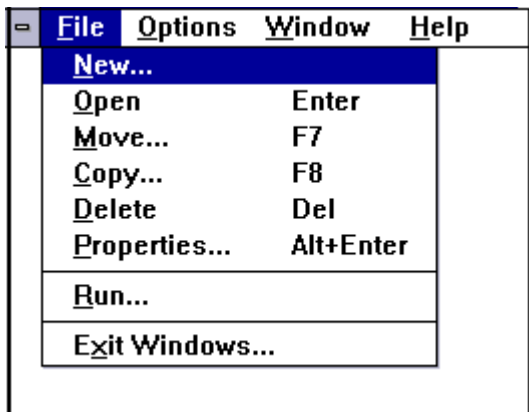


Figure 3-9.

5. TYPE in []:TINSTALL" (if the display driver disk is in the B drive or DISC in CD ROM then TYPE in X:TINSTALL") and then PRESS ENTER (see Figure 3-10).

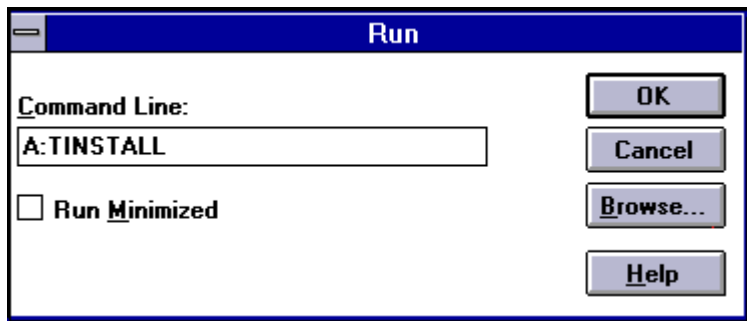


Figure 3-10.

6. A menu will appear, presenting a choice of Express or Custom Installation. Express installation is quick and decision free. Display drivers will be copied into the TRIDENT.SGI directory and Utility files will be copied into the TRIDENT.UTL directory. Once all files are copied, a program group
-

called DISPLAY DRIVER AND UTILITIES will be created.

Custom installation allows control over file storage and in what program group the icons are placed. The first dialog box that appears shows the default directory to which the display drivers will be copied. To change the directory name select the default name, delete it and then enter the desired directory name. Once the desired directory name is selected, continue the installation procedure by selecting CONTINUE, or by pressing ENTER. The next dialog box displays a summary of where files are stored. Select CONTINUE to copy the drivers and utilities files. When all files are copied, the program will present a choice of program groups where the icons will be created. Create a new group to place the utility icons or select from pre-existing groups (e.g. main, applications, accessories etc.).

When all necessary files are copied and a group name is selected, the TINSTALL program will create three icons:

- a. Screen Control (Used to configure display drivers).
- b. DPMS (Used for power management configurations).
- c. UNinstall (Used to delete the installed TRIDENT drivers).

NOTE : Different Display driver set" versions cannot be installed to the same directory name.

Display driver sets" of the same version number (e.g. US6.x) will replace the existing one.

3.1.3.1 SCREEN CONTROL

The Screen Control panel contains controls for setting screen resolution, color depth, font size, refresh rates. Not all combinations of screen resolution, color depth, font size and refresh rate are attainable.

Color depths of 16, 256, 64K, or 16.7M colors can be selected by clicking next to the desired option. Color depth determines the number of colors that may be simultaneously displayed on the screen. The selected color depth determines the possible resolutions.

Screen resolutions of 640x480, 800x600, 1024x768, 1280x1024 or 1600x1200 can be selected by clicking next to the available options. The virtual screen size is automatically adjusted to be at least as large as the selected screen resolution.

Available refresh rates are dependent on the selected color depth and resolution. The Back to Default" option is used to reset the refresh rate to the factory default value in case your monitor does not support a high refresh rate.

3.1.3.1.1 Configuring the Display Driver

- Select the color depth first.
- Select the resolution.
- Select the font size (if available as an option).
- Select the refresh rate.
- Click on OK. If the current driver does not support the selected configuration, Windows will have to be restarted.

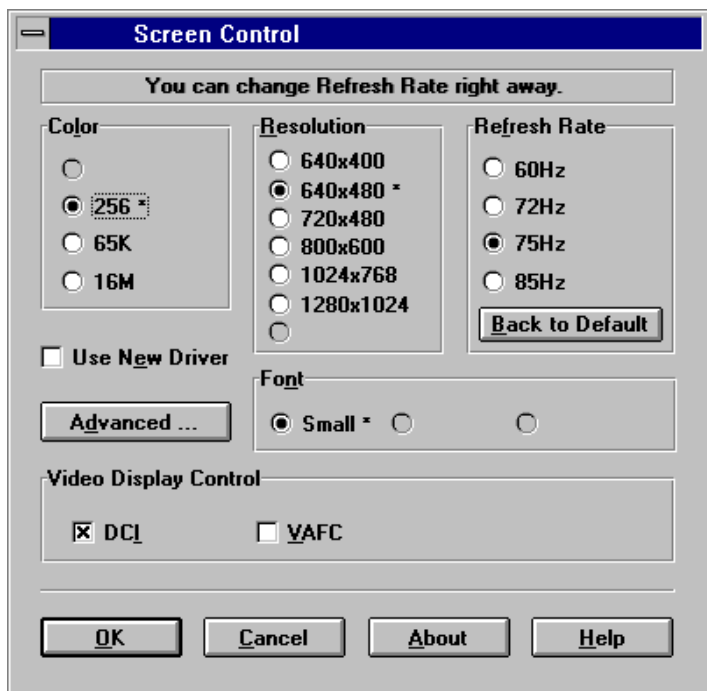


Figure 3-11.

3.1.3.1.2 DDC Monitor Auto Detection

If your monitor is a PLUG & PLAY™ monitor and is in compliance with VESA DDC2 Standard, the display driver will automatically detect the information provided by the DDC2 compliant monitor. If the display driver is not able to correctly detect the information provided by the monitor, a message will be displayed that allows you to:

Accept it: The display driver will save the information from the DDC2 monitor that it was able to detect.

Ignore DDC: The display driver will not save the information from the DDC2 monitor and this monitor will not be treated as an DDC2 compliant monitor.

Try Again: The display driver will attempt again to detect the information provided by the DDC2 monitor.



There is an ERROR reading the DDC monitor!

Please make sure that the following information of the DDC monitor is ACCEPTABLE or NOT.

Manufacturer	GSM
Product ID	1
Serial No	0
Year	1995

Accept it

Ignore DDC

Resolutions	Max Refr-Rates
640x480	72
800x600	72
1024x768	70

Try Again

Figure 3-12.

If the display driver is able to detect the monitor successfully, the correct information will be shown once the button "DDC Monitor" in the Advanced page of the Screen Control panel is selected.

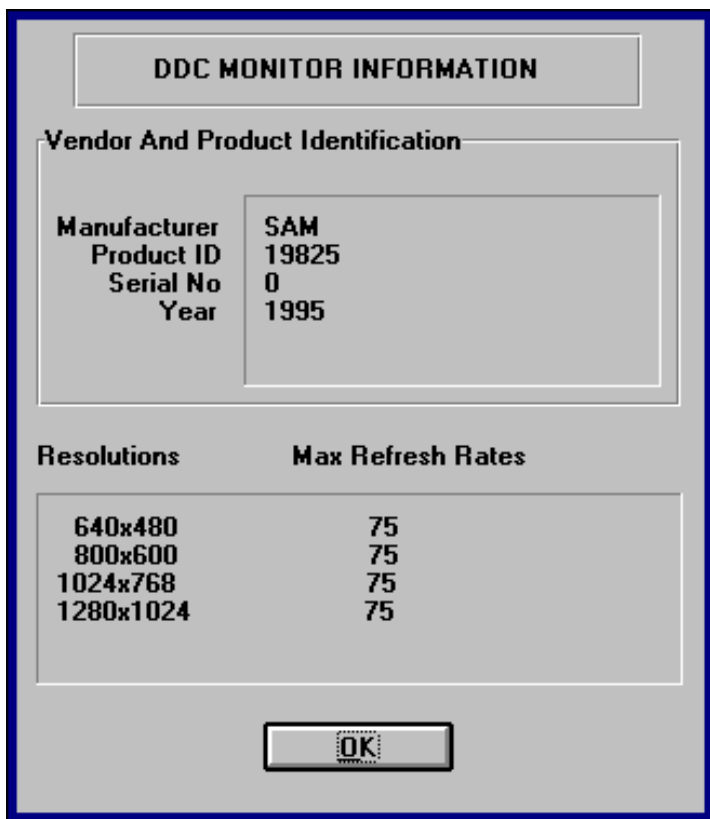


Figure 3-16.

3.2

OS/2 Driver Installation

Before installing Trident display driver for the first time, the current display type has to be VGA mode. The instructions to return to VGA mode are in the "Recovering from an incorrect display type selection" section of your OS/2 user manual. Trident OS/2 display driver is installed by following these simple steps.

1. PLACE the Trident OS/2 driver diskette into diskette drive A: or diskette drive B. (DISC into CD ROM)
2. OPEN an OS/2 full-screen or OS/2 Window session under "Command Prompt" of the System folder.
3. PRESS ALT+F1 after OS/2 shows up in the upper left hand corner, and then SELECT '.
4. SWITCH the current drive to the diskette drive where the Trident OS/2 driver diskette was inserted.
5. At the drive prompt, TYPE the following command: "INSTALL". The Trident LOGO will now appear and a screen that reads "Trident Display Drivers Setting" will appear after that.

3.2.1 DISPLAYING OR CHANGING SCREEN RESOLUTION

This Trident OS/2 Display Drivers utility supports the following resolutions with OS/2. The required memory is shown in parentheses.

640x480x256	800x600x65K
800x600x256	1024x768x65K (2M)
1024x768x256	640x480x16.7M
1280x1024x256 (2M)	800x600x16.7M (2M)
640x480x65K	

The first page of the Trident Display Drivers Settings window is labeled Screen Resolution selection page.

- SELECT the resolution and color depth
- ENABLE/DISABLE virtual screen

The second page is the Monitor Model selection page.

- CLICK on Monitor tab to go to this page.
- POINT to and CLICK on the down arrow button to show a list of monitor models.
- SELECT the monitor model. If you can not find your monitor's model, SELECT "Default".

The third page is the Refresh Rate selection page.

- CLICK on Refresh tab to go to this page.
 - The refresh rates displayed are those supported at each resolution by the monitor specified in the Monitor Model selection page.
 - You can change the refresh rates by CLICKING on down arrow button and then CLICKING on the desired refresh rate.
 - After the selections, CLICK on the Install button to complete the installation.
-

-
- REBOOT OS/2 to have this installation take effect.

3.2.2 SCREEN RESOLUTION CONFIGURATION PROCEDURE

- ☑ DOUBLE-CLICK on the Video configuration folder, and then DOUBLE-CLICK on the Display Setting" object.
- ☑ To change resolution and/or color depth CLICK on Screen" tab". SELECT the resolution and color depth. CLICK on "Se " button.
- ☑ To enable virtual screen POINT to and CLICK Virtual Screen on the button
- ☑ To change refresh rate CLICK on Refresh tab.

POINT to and CLICK on the down arrow button. SELECT the refresh rate.

CLICK on the "Set" button to take effect.

If you don't want the selected refresh rate, CLICK the Undo button or PRESS the 'U' key to return to previous refresh rate.

3.2.2.1 Virtual Screen

Virtual screen allows the monitor to display the information of a larger screen within the physical borders of the monitor. On some monitors the display fonts at higher resolutions, such as 1024x768, may be too small to read. If virtual screen is enabled for 1024x768 resolution, the display font will be larger in 640x480 resolution or 800x600 resolution; however, the information displayed will be that of 1024x768 resolution.

To enable virtual screen:

- ☑ 1. SET UP the Trident display at a higher resolution, such as 1024x768.
- ☑ 2. SHUTDOWN the system and then re-start the system.
- ☑ 3. GO into the Video configuration folder and CLICK on the Display Setting" object to select the screen resolution page.
- ☑ 4. CHOOSE a smaller resolution such as 640x480 and CHECK the line that says "Virtual Screen On".
- ☑ 5. CLICK on the 'Set' button and the screen will automatically be set to physical screen size of 640x480 with virtual screen size of 1024x768.

To return to base mode from virtual screen:

- ☑ 1. SELECT base mode screen resolution.
- ☑ 2. SELECT 'Set'.

Notes:

1. To activate virtual screen, color depth has to be the same for both the physical screen and virtual screen.
 2. Virtual screen size has to be larger than physical screen size.
 3. If you change the resolution, you must reboot OS/2 to have the changes take effect.
 4. If you decide to change your hardware system configuration, such as upgrading video memory or system memory, you should
 - a) Change the resolution to VGA.
 - b) Change the hardware configuration.
-

c) Re-install the Trident OS/2 Display Drivers.

3.3 DOS Utilities

The Utility Installation program is used to install and retrieve instructions on:

- a) Utility programs
- b) Non-Windows applications display drivers.

The Utility installation program is run by executing the following steps:

1. INSERT the Drivers and Utilities Disk #2 in the floppy drive or DISC in CD ROM
2. TYPE in README" at the floppy drive prompt.
3. A numbered list of available destination drives will be displayed on the screen. SELECT the destination drive by TYPING in the corresponding number; e.g., to select drive C, type in "1" (see Figure 3-26).



Figure 3-26.

4. Files and sub-directories will be expanded into the newly created directory. TVGAUTIL. A new menu will then be displayed on the screen, showing a list of on-line instructions (see Figure 3-27).

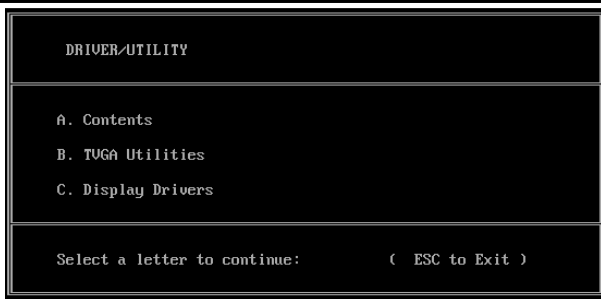


Figure 3-27.

- 5. Selecting A will display the contents of all drivers in the list.
- 6. Selecting B will display instructions on the available utility programs.
- 7. Selecting C will display instructions on how to install display drivers for non-Windows applications.

3.3.1.1 SVM.EXE

SVM is a menu-driven program designed to select and test all video modes available to the adapter.

HOW TO USE SVM

The SVM program can be executed in either of two ways: by calling up the menu and selecting from the menu choices, or by entering the desired mode directly with a specific command line.

HOW TO USE SVM FROM THE MENU

- 1. SWITCH directory to X:\TVGAUTIL\UTILITY" where X: is the drive where the Trident Utility and DOS Application driver files have been copied.
- 2. TYPE SVM to call up the menu (see Figure 3-28).

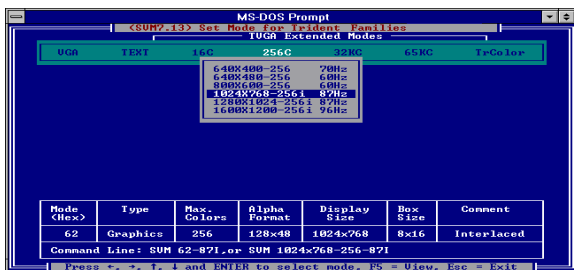


Figure 3-28.

The top bar shows the available color depths. This is traversed through by use of the right/left arrow keys.

The program provides all the different resolutions supported by the chip under each color depth. These resolutions are traversed by the up/down arrow keys. The graphics adapter can be tested for each resolution/ mode by first high-lighting the selection (e.g. 1024x768-256 colors as shown in Figure 3-28) by use of the arrow keys, then pressing the F5 key.

- The graphics adapter can be run at a selected mode by first selecting the mode and then pressing ENTER.

HOW TO USE SVM FROM THE COMMAND LINE

The SVM program may be used to select a mode directly from the command line following two simple steps:

- ☑ 1. SWITCH directory to X:\TVGAUTIL\UTILITY" where X: is the drive where the Trident Utility and DOS Application driver files have been copied.
- ☑ 2. TYPE in SVM [mode number] and PRESS ENTER. For example, to run the graphics adapter in mode 62H, the command line would be :
SVM 62 <ENTER>

3.4 AutoCAD TurboDLD Classic Driver by Panacea

TurboDLD Classic Driver by Panacea is a combined display interface and rendering driver. It supports DOS versions of AutoCAD 10/386, 11/386, 12/386 and 13/386. It offers the following resolutions for the drawing editor :

640x480	256 colors	800x600	256 colors
1024x768	256 colors	1280x1024	256 colors
640x480	65K colors	800x600	65K colors

It also offers the following resolutions for rendering:

640x480	256 colors	800x600	256 colors
1024x768	256 colors	1280x1024	256 colors
640x480	65K colors	800x600	65K colors

To install the display drivers for AutoCAD 10/386, 11/386, 12/386 or 13/386, the Display Driver for AutoCAD and the proper AutoCAD 386 Release is required.

IMPORTANT: Ensure that AutoCAD is already installed with the IBM Standard VGA driver.

3.4.1 AUTOCAD/386 RELEASE 10 AND 11

- ☑ 1. CHANGE the directory to A:\ACAD.
TYPE "INSTALL", PRESS the ENTER key.
FOLLOW the installation steps on the screen. The TurboDLD Classic Driver and the other files will be copied to the proper ACAD working sub-directory.
- ☑ 2. RUN DLD386's FASTCAD.BAT, or
COPY the commands from the file into the AUTOEXEC.BAT file *before* running AutoCAD.
FASTCAD.BAT sets the environment variables including DLDCFG, DSPADI, RDPADI and RCPADI.
- ☑ 3. START AutoCAD/386 and SELECT CONFIGURE AUTOCAD from the Main Menu.
- ☑ 4. SELECT CONFIGURE VIDEO DISPLAY.
- ☑ 5. SELECT ADI P386 v4.0/4.1 display.
This will call up TurboDLD's configuration menu, which should be used to select the desired graphics board, resolution.
- ☑ 6. SELECT the graphics area background color, text color (for the menu status line and command prompt areas of the screen), text background color, border color, and dialog box/button outline color.
To select the default colors, PRESS ENTER at each prompt. To select a different color, ENTER the desired color number at the given prompt.

3.4.2 AUTOCAD/386 RELEASE 12 AND 13

3.4.2.1 Display Driver Installation Procedure

- ☑ 1. CHANGE the directory to A:\ACAD.
TYPE "INSTALL" and PRESS the ENTER key.
FOLLOW the installation steps on the screen. The TurboDLD Classic Driver and the other files will be copied to the proper ACAD working sub-directory.

3.4.2.2 Editor Installation Procedure

The display driver for the drawing editor and rendering, is installed by following these steps:

- ☑ 1. RUN the AutoCAD Drawing Editor screen.
- ☑ 2. SELECT CONFIGURE in the File pull-down menu.
AutoCAD will then switch to a text screen.
- ☑ 3. PRESS any key to continue after reading the "welcome to TurboDLD!" file.
- ☑ 4. SELECT Select Graphics Board/Resolution" in the TurboDLD Classic V2.10 for the Trident Main Menu.
- ☑ 5. FOLLOW the menu to select the desired resolution.
- ☑ 6. SAVE the selection, and EXIT from TurboDLD's configuration.
- ☑ 7. ENTER "0" to return to the Drawing Editor screen.
- ☑ 8. ANSWER "Y" to save configuration changes.

3.4.2.3 Rendering Installation Procedure

- ☑ 1. ENSURE that Rendering for AutoCAD Rel 12 is already installed.
- ☑ 2. SELECT PREFERENCES in the Render pull-down menu from the Drawing Editor screen.
- ☑ 3. If Rendering has been previously configured, SELECT RECONFIGURE in the Rendering Preferences dialog box. Otherwise, the program automatically will switch directly to a text screen.
- ☑ 4. SELECT "2" to configure the rendering driver.
- ☑ 5. SELECT "AUTOCAD'S CONFIGURED P386 ADI COMBINED DISPLAY/RENDERING DRIVER."
- ☑ 6. SELECT the desired resolution for rendering.
- ☑ 7. SELECT the desired rendering view
- ☑ 8. ENTER "0" to return to the Drawing Editor screen.
- ☑ 9. ANSWER "Y" to save configuration changes.
CLICK OK to close the Rendering Preferences dialog box

3.5 Optional TV Out

In Windows 95, use 'Television' control page and 'Display Device' control page to select television only features in display properties once the display driver for Windows 95 has been installed. The 'Television' control page allows the user to select 'Underscan' or 'Overscan', to select 'Interlaced' or 'Non-interlaced', to adjust the 'Screen Shift' of the television display horizontally and to select the degree of flicker reduction under Advance control button. The 'Display Device' control page allows the user to switch from color monitor to TV as the default display device and vice versa.

In Windows 3.x, use the Display Control program in Display Driver and Utility Program Group to access TV display features and to switch from color monitor to TV as the default display device and vice versa. The Display Control program allows the user to select Underscan or Overscan, to select interlaced or non-interlaced, to select degree of flicker reduction and to adjust screen shift both horizontally and vertically.

In DOS, a TSR program "TVDISP" is available in the directory of "X:\TVGAUTIL\UTILITY" (where X is the letter of your hard disk drive). This program allows the user to select 'Underscan' or 'Overscan', to select 'Interlaced' or 'Non-interlaced', to switch from color monitor to TV as the default display device and vice versa, to adjust the 'Screen Shift' of the television display both horizontally and vertically, and to contract or expand the size of screen both horizontally and vertically. More information about the TVDISP program is available in the REAME.TXT file of this directory.

Conventional broadcast TV or VCR content provides an "Overscanned" viewing area in order to ensure that the entire visible screen is used. The result is that portions of the image along the border are beyond the physical screen. The actual visual area lost is dependent on the individual TV model. On the other hand, a PC system display content should be within the boundaries of the physically viewable screen. This is called underscan. When the TV is used as the display device in a PC, display hardware needs to control the image generation circuitry to drive the underscan timing to the TV.

Besides generating interlaced timing, hardware may have the option to drive non-interlaced timing to the TV. A non-interlaced display will remove much of the flicker effect but reduce the detail of the image.

The interlaced timing of a TV causes a flickering effect on the screen. Depending on the TV standard and tube phosphor material, the severity of flicker differs from one brand and model of TV to another. Since TV content is almost always full-motion video or animation, flicker is not as noticeable as it is when the screen content is stationary. Flickers are caused by TV low frame rate as well as the interlacing of adjacent scans. This flicker is most obvious when a particular scan contrasts highly with the scans directly above and below, such as a black horizontal line on a white background. This type of flicker can be greatly reduced

by 3Dim 9750's built-in flicker reduction filter.

4. Frequently Asked Questions (FAQ)

Q1 Why do we need 3D graphics capability in our PC?

Answer

3D technology is becoming increasingly important (and common) not only in games, but also in other applications such as VRML, which allows 3D scene descriptions in Web applications. 3D technology is used for image editing, modeling, and an increasing number of in home and business applications. In games, as well as other applications, 3D acceleration not only allows better visual qualities and more realistic scenery attributes than software alone, but it also allows a higher frame rate, which translates into a more interactive experience for the end users.

Q2 What does Rendering Engine" mean?

Answer

Rendering Engine" generically applies to the part of the graphics engine that draws 3D primitives, usually triangles. In most implementations, the rendering engine is responsible for interpolation of edges and "filling in" the triangle.

Q3 What does the set-up engine do in a graphics controller?

Answer

A set-up engine allows drivers to pass triangles in the form of raw vertex information; whereas, most common designs force triangles to be pre-processed for the rendering engine in terms of delta values for edges, color, and texture.

Q4 Why does a 3D graphics chip need to have both a rendering engine and a setup engine?

Answer

Any "3D application", a game, VRML, or modeling package, can benefit from 3D rendering. This is especially true of applications that use texturing extensively, because texturing and texture filtering are very intensive operations at the pixel level in terms of CPU operations and demands for memory bandwidth. Without a set-up engine in a graphics controller, the CPU has to calculate the delta values for edges, color, and textures; the drivers need to handle ten (10) times more extensive data. This results in slower 3D pipeline operations between the CPU and the graphics controller.

Q5 If we use powerful CPUs, such as a Pentium™ 200, can a standard 2D graphics card achieve 3D performance?

Answer

Yes and no. Software rendering can take advantage of "tricks" learned by force of necessity through years of trial and error. With such stratagems, the speed of software rendering for simple scenes can approach that of low-level hardware 3D rendering. On the other hand, as scenes become more complex (or frame sizes become larger), there are conflicts between using the CPU for high-level game logic, geometry, lighting, and rendering, all of which increase their demands. No current CPU or system can perform advanced quality-enhancements (bilinear filtering and alpha blending) in real time. Even general case texture mapping with RGB lighting is too much for the current CPU generation.

Q6 What does "software 3D" mean ?

Answer

Software 3D is generally used to mean using non-specific (2D) hardware in conjunction with the CPU to render for 3D applications. Some of these techniques allow usable 3D applications when high-powered and/or MMX™-equipped CPU's are employed along with special-case software optimization techniques. As stated above, SW 3D can achieve credible results with today's (software optimized) applications, but the rising popularity of good 3D hardware at the consumer price level is inexorably compelling the public to expect hardware level scene enhancements and frame rates.

Q7 What is SGRAM"?

Answer

Synchronous Graphics Random Access memory (SGRAM) is a new and improved type of memory, custom-designed for graphics use.

Q8 What is the advantage of SGRAM as compared to ordinary DRAM?

Answer

SGRAM is now capable of running at much higher speeds than fast page or EDO DRAM. Also, SGRAM is able to execute a small number of frequently executed operations, such as buffer clears, specific to graphics applications, independently of the controller.

Q9 What is 3DI9750?

Answer

The 3DI9750 is one of the first of the "second generation" 3D controllers which will catapult 3D applications of all types into the PC mainstream by providing the feature set and performance necessary for compelling 3D applications. It does this by combining proven VGA, video, and graphics

acceleration with an advanced 3D rendering core including a set-up engine and a full 3D feature set.

5. Troubleshooting

The following are some recommended steps to take if the GUI accelerator adapter will not boot or operate properly in your system:

Ensure that the monitor or TV brightness and contrast controls are properly adjusted. Check to see if your monitor or TV is properly connected to the card. Be sure your monitor's pin definitions match those of your GUI accelerator card (See Appendix B). For TV out, ensure that the composite signal is connected to a Video Input" RCA jack on the TV (or check the S-video connection). Read the TV owner's manual to select the proper signal jack for the display.

Turn the system on and confirm that the power supply is operating properly; i.e., that the fan operates and the system power light turns on.

Check to see if the card is firmly seated in its PCI bus expansion slot. It should not be making contact with any other cards in the system.

Note: Turn the system off before adjusting the card.

Problem: ***Windows hangs up during or after installing a driver.***

Solution A: Reread installation procedures to be sure you have installed the drivers correctly.

Problem: ***Windows color palette does not look right or colors changing.***

Solution: Most likely a defective RAMDAC, memory chip, clock chip, or crystal. Contact your dealer to have the problem repaired.

Problem: ***Can't display certain modes.***

Solution A: Run the SVM program (See the User's Guide for more information on the SVM program). If the SVM program fails, go to Solutions B, and C.

Solution B: Check to see that there is enough memory on the GUI accelerator to run this mode. For example, to run display mode 79H (1024x768-64K colors, refer to the tables in Section 2), 2 MB of display memory is required.

Solution C: If Solutions A, or B do not resolve this problem, it may be hardware related. Check the specifications of the monitor.

6. Appendix A: Video Mode Table

The adapter's video modes include all of the following:

TABLE 6-1: VGA MODE SUPPORT

Mode #	Resolution -Colors	Horz KHz	Vert Hz	Mem Req	TV Out
0h,1h	320x200-16	31.4	70	512K	N,P
2h,3h	640x400-16	31.4	70	512K	N,P
4h,5h	320x200-4	31.4	70	512K	N,P
6h	640x200-2	31.4	70	512K	N,P
7h	720x350-Mono	31.5	70	512K	N,P
Dh	320x200-16	31.4	70	512K	N,P
Eh	640x200-16	31.4	70	512K	N,P
Fh	640x350-2	31.4	70	512K	N,P
10h	640x350-16	31.4	70	512K	N,P
11h	640x480-2	31.4	60	512K	N,P
12h	640x480-16	31.4	60	512K	N,P
13h	320x200-256	31.4	70	512K	N,P
20/1h_2	864x480-32K/64K	37.5	75	1M	#
20/1h_1	864x480-32K/64K	31.4	60	1M	#
22h_2	864x480-256	37.5	75	512K	#
22h_1	864x480-256	31.4	60	512K	#
23h_2	864x480-16M	37.5	75	2M	#
23h_1	864x480-16M	31.4	60	2M	#
2Ch	320x200-256	31.6	70	512K	N,P
2Dh_3	320x240-256	37.5	75	512K	
2Dh_2	320x240-256	37.9	72	512K	
2Dh_1	320x240-256	31.5	60	512K	N,P
2Eh_2	400x300-256	46.9	75	512K	
2Eh_1	400x300-256	37.9	60	512K	P
32h_5	512x384-256	68.7	85	512K	#
32h_4	512x384-256	60.0	75	512K	#
32h_3	512x384-256	56.5	70	512K	#
32h_2	512x384-256	48.4	60	512K	#
32h_1	512x384-256	35.5	87i	512K	#
3Bh	320x200-16M	31.6	70	512K	N,P
3Ch_3	320x240-16M	37.5	75	512K	

3Ch_2	320x240-16M	37.9	72	512K	
3Ch_0	320x240-16M	31.5	60	512K	N,P
3Dh_3	400x300-16M	53.7	85	512K	
3Dh_2	400x300-16M	46.9	75	512K	
3Dh_1	400x300-16M	37.9	60	512K	P
3Eh_4	512x384-16M	60.0	75	1M	#
3Eh_3	512x384-16M	56.5	70	1M	#
3Eh_2	512x384-16M	48.4	60	1M	#
3Eh_1	512x384-16M	35.5	87i	1M	#
42/3h	320x200-32K/64K	31.6	70	512K	N,P
44/5h_4	320x240-32K/64K	43.3	85	512K	
44/5h_3	320x240-32K/64K	37.5	75	512K	
44/5h_2	320x240-32K/64K	37.9	72	512K	
44/5h_1	320x240-32K/64K	31.5	60	512K	N,P
46/7h_4	400x300-32K/64K	53.7	85	512K	
46/7h_3	400x300-32K/64K	46.9	75	512K	
46/7h_2	400x300-32K/64K	37.9	60	512K	P
48/9h_5	512x384-32K/64K	68.7	85	512K	#
48/9h_4	512x384-32K/64K	60.0	75	512K	#
48/9h_3	512x384-32K/64K	56.5	70	512K	#
48/9h_2	512x384-32K/64K	48.4	60	512K	#
48/9h_1	512x384-32K/64K	35.5	87i	512K	#
50h	640x480-16	31.5	60	512K	N,P
51h	640x473-16	31.5	60	512K	
52h	640x480-16	31.5	60	512K	N,P
53h	1056x350-16	31.3	70	512K	
54h	1056x480-16	31.3	60	512K	
55h	1056x473-16	31.3	60	512K	
56h	1056x480-16	31.3	60	512K	
57h	1188x350-16	31.3	70	512K	
58h	1188x480-16	31.3	60	512K	
59h	1188x473-16	31.3	60	512K	
5Ah	1188x480-16	31.3	60	512K	
5Bh_3	800x600-16	53.7	85	512K	
5Bh_2	800x600-16	46.8	75	512K	
5Bh_1	800x600-16	37.8	60	512K	P
5Ch	640x400-256	31.6	70	512K	N,P
5Dh_4	640x480-256	43.2	85	512K	

5Dh_3	640x480-256	37.5	75	512K	
5Dh_2	640x480-256	37.8	72	512K	
5Dh_1	640x480-256	31.4	60	512K	N,P
5Eh_3	800x600-256	53.7	85	512K	
5Eh_2	800x600-256	46.8	75	512K	
5Eh_1	800x600-256	37.8	60	512K	P
5Fh_5	1024x768-16	68.7	85	512K	
5Fh_4	1024x768-16	60.4	75	512K	
5Fh_3	1024x768-16	56.4	70	512K	
5Fh_2	1024x768-16	48.5	60	512K	
5Fh_1	1024x768-16	35.5	87i	512K	
60h	720x480-256	31.4	60	512K	N,#
61h	720x480-16M	31.4	60	2M	N,#
62h_5	1024x768-256	68.7	85	1M	
62h_4	1024x768-256	60.0	75	1M	
62h_3	1024x768-256	56.4	70	1M	
62h_2	1024x768-256	48.3	60	1M	
62h_1	1024x768-256	35.5	87i	1M	
63h_3	1280x1024-16	80.0	75	1M	
63h_2	1280x1024-16	63.9	60	1M	
63h_1	1280x1024-16	46.4	87i	1M	
64h_4	1280x1024-256	91.1	85	2M	
64h_3	1280x1024-256	80.0	75	2M	
64h_2	1280x1024-256	63.9	60	2M	
64h_1	1280x1024-256	46.4	87i	2M	
65h_2	1600x1200-16	75	60	1M	
65h_1	1600x1200-16	62.5	96i	1M	
66h_4	1600x1200-256	106.3	85	2M	
66h_3	1600x1200-256	93.8	75	2M	
66h_2	1600x1200-256	75	60	2M	
66h_1	1600x1200-256	62.5	96i	2M	
6Ah_1 ¹	800x600-16	37.8	60	512K	
6Bh	640x400-16M	31.6	70	2M	N,P
6Ch_4	640x480-16M	43.2	85	2M	
6Ch_3	640x480-16M	37.5	75	2M	
6Ch_2	640x480-16M	37.8	72	2M	
6Ch_0	640x480-16M	31.4	60	2M	N,P
6Dh_3	800x600-16M	53.7	85	2M	

6Dh_2	800x600-16M	46.8	75	2M	
6Dh_1	800x600-16M	37.8	60	2M	P
66h_2	1600x1200-256	75	60	2M	
6Eh_5	1024x768-16M	68.7	85	4M	
6Eh_4	1024x768-16M	60.0	75	4M	
6Eh_3	1024x768-16M	56.4	70	4M	
6Eh_2	1024x768-16M	48.3	60	4M	
6Eh_1	1024x768-16M	35.5	87i	4M	
70/1h	720x480-32K/64K	31.4	60	1M	N,#
72/3h	640x400-32K/64K	31.6	70	1M	
74/5h_4	640x480-32K/64K	43.2	85	1M	
74/5h_3	640x480-32K/64K	37.5	75	1M	
74/5h_2	640x480-32K/64K	37.8	72	1M	
74/5h_1	640x480-32K/64K	31.4	60	1M	N,P
76/7h_4	800x600-32K/64K	53.7	85	1M	
76/7h_3	800x600-32K/64K	46.8	75	1M	
76/7h_2	800x600-32K/64K	37.8	60	1M	P
78/9h_5	1024x768-32K/64K	68.7	85	2M	
78/9h_4	1024x768-32K/64K	60.0	75	2M	
78/9h_3	1024x768-32K/64K	56.4	70	2M	
78/9h_2	1024x768-32K/64K	48.3	60	2M	
78/9h_1	1024x768-32K/64K	35.5	87i	2M	
7A/Bh_3	1280x1024-32K/64K	80	75	4M	
7A/Bh_2	1280x1024-32K/64K	63.9	60	4M	
7A/Bh_1	1280x1024-32K/64K	46.4	87i	4M	
7C/Dh_4	1600x1200-32K/64K	106.3	85	4M	
7C/Dh_3	1600x1200-32K/64K	93.8	75	4M	
7C/Dh_2	1600x1200-32K/64K	75.0	60	4M	
7C/Dh_1	1600x1200-32K/64K	62.5	96i	4M	

NOTES:

1. VESA mode. Same as 5Bh_1.
2. The "i" in the vertical frequency column denotes "interlaced". The "N" and "P" in the TV Out column denote "NTSC" and "PAL", respectively.
3. The "#" in the TV Out column list modes which are available on 3DIm 羿 e9750 but is not available on 3DImae9753

7. Appendix B: Pin-out and Sync Frequencies

7.1 Analog Color Display Pin-outs

Table 7-1 lists the GUI accelerator analog color display pin-outs.

**TABLE 7-1. ANALOG COLOR DISPLAY
PINOUTS**

PIN	FUNCTION	PIN	FUNCTION
1	Red Video ¹	9	Key (no pin)
2	Green Video ¹	10	Sync Return (ground)
3	Blue Video ¹	11	Monitor ID (not used)
4	Not Used	12	SDA (DDC support)
5	Ground	13	Horizontal Sync
6	Red Return (ground)	14	Vertical Sync
7	Green Return (ground)	15	SCL (DDC support)
8	Blue Return (ground)		

Note 1: Analog monochrome type monitors use green video for all video input and ignore red and blue video.

7.2 Conversion Table: Pin Adapters

If you will be using a 9-to-15 pin adapter cable to link your 9 pin monitor connector to the 15 pin accelerator card connector, check Table 7-2 carefully before you install the cable. The 9-to-15 pin adapter cables are available from a variety of sources, but they need to match the specifications in Table 7-2 to work properly with your new card.

The adapter cable requires a D-shaped 9 pin female connector and a D-shaped 15 pin male connector.

TABLE 7-2. 9-TO-15 PIN CONVERSION TABLE

9 PIN SIGNALS	PIN NO.	15 PIN SIGNALS	PIN NO.
Red	1	Red	1
Green	2	Green	2
Blue	3	Blue	3
Horz Sync	4	Horz Sync	13
Vert Sync	5	Vert Sync	14
Red Ground	6	Return Red	6
Green Ground	7	Return Green	7
Blue Ground	8	Return Blue	8
Sync Ground	9	Digital Ground	10
		Ground	5

7.3 Analog Video Signals

Black Level = 0 V

Full Intensity (White) Level = +0.7 V

**8. Appendix C: FCC Compliance Statement
Federal Communications Commission (FCC) Statement**

RADIO FREQUENCY INTERFERENCE STATEMENT

This equipment has been tested and found to comply with the limits for a class B digital device, pursuant to Part 15 of the FCC rules. These limits are designed to provide reasonable protection against harmful interference in a residential installation. This equipment generates, uses and can radiate radio frequency energy and if not install and used in accordance with the instructions, may cause harmful interference to radio communications. However, there is no guarantee that interference will not occur in a particular installation. If this equipment does cause harmful interference to radio or television reception, which van be determined by turning the equipment off and on, the user is encouraged to try to correct the interference by one or more of the following measures:

- Reorient the receiving antenna.
- Increase the separation between the equipment and receiver.
- Connect the equipment into an outlet on a circuit different from that to which the receiver is connected.
- Consult the dealer or and experienced Radio/TV technician for help.

Any special accessories needed for compliance must be specified in the instruction manual.

Warning : A wileded-Type power cord in required in order to meet FCC emission limits and also to prevent interference to the nearby Radio and Television reception. It is essential that only the supplied power cord be used.

Use only shielded cables to connect I/O devices to this equipment.

You are cautioned that changes or modifications not expressly approved by the party responsible for compliance could void you authority to operate the equipment.

Trademark Acknowledgments

All brand names and trademarks are the property of their owners.
